

Continuous Glucose Monitoring Profile

Bluetooth[®] Profile Specification



- ▶ **Date** 2015-Dec-15
- ▶ **Revision** v1.0.1
- ▶ **Group Prepared By** MEG WG
- ▶ **Feedback Email** med-main@bluetooth.org

Abstract:

This profile enables a device to connect and interact with a Continuous Glucose Monitoring (CGM) Sensor for use in consumer healthcare applications.

Revision History

Revision Number	Date	Comments
V1.0.0	2014-11-18	Approved by the Bluetooth SIG BoD
d1.0.1	2015-11-19	ESR09 (integrated E6173)
v1.0.1	2015-12-15	Adopted by the Bluetooth SIG BoD

Contributors

Name	Company
Ray Strickland	Roche
Ralf Schmitz	Roche
Felix Bootz	Roche
Wolfgang Heck	Roche
Krishna Shingala	Mindtree
Laurence Richardson	CSR
Leif-Alexandre Aschehoug	Nordic Semiconductor
Nathaniel Hamming	University Health Network
Melanie Yeung	University Health Network
Jordan Hartmann	Nonin Medical, Inc.

v1.0.1

DISCLAIMER AND COPYRIGHT NOTICE

This disclaimer applies to all draft specifications and final specifications adopted by the Bluetooth SIG Board of Directors (both of which are hereinafter referred to herein as a Bluetooth “Specification.” Your use of this Specification in any way is subject to your compliance with all conditions of such use, and your acceptance of all disclaimers and limitations as to such use, contained in this Specification. Any user of this Specification is advised to seek appropriate legal, engineering or other professional advice regarding the use, interpretation or effect of this Specification on any matters discussed in this Specification.

Use of Bluetooth Specifications and any related intellectual property is governed by the Promoters Membership Agreement among the Promoter Members and Bluetooth SIG (the “Promoters Agreement”), certain membership agreements between Bluetooth SIG and its Adopter and Associate Members, including, but not limited to, the Membership Application, the Bluetooth Patent/Copyright License Agreement and the Bluetooth Trademark License Agreement (collectively, the “Membership Agreements”) and the Bluetooth Specification Early Adopters Agreements (1.2 Early Adopters Agreements) among Early Adopter members of the unincorporated Bluetooth SIG and the Promoter Members (the “Early Adopters Agreement”). Certain rights and obligations of the Promoter Members under the Early Adopters Agreements have been assigned to Bluetooth SIG by the Promoter Members.

Use of the Specification by anyone who is not a member of Bluetooth SIG or a party to an Early Adopters Agreement (each such person or party, a “Member”) is prohibited. The use of any portion of a Bluetooth Specification may involve the use of intellectual property rights (“IPR”), including pending or issued patents, or copyrights or other rights. Bluetooth SIG has made no search or investigation for such rights and disclaims any undertaking or duty to do so. The legal rights and obligations of each Member are governed by the applicable Membership Agreements, Early Adopters Agreement or Promoters Agreement. No license, express or implied, by estoppel or otherwise, to any intellectual property rights are granted herein.

Any use of the Specification not in compliance with the terms of the applicable Membership Agreements, Early Adopters Agreement or Promoters Agreement is prohibited and any such prohibited use may result in (i) termination of the applicable Membership Agreements or Early Adopters Agreement and (ii) liability claims by Bluetooth SIG or any of its Members for patent, copyright and/or trademark infringement claims permitted by the applicable agreement or by applicable law.

THE SPECIFICATION IS PROVIDED “AS IS” WITH NO WARRANTIES WHATSOEVER, INCLUDING ANY WARRANTY OF MERCHANTABILITY, NONINFRINGEMENT, FITNESS FOR ANY PARTICULAR PURPOSE, SATISFACTORY QUALITY, OR REASONABLE SKILL OR CARE, OR ANY WARRANTY ARISING OUT OF ANY COURSE OF DEALING, USAGE, TRADE PRACTICE, PROPOSAL, SPECIFICATION OR SAMPLE.

Each Member hereby acknowledges that products equipped with the Bluetooth wireless technology (“Bluetooth Products”) may be subject to various regulatory controls under the laws and regulations of various governments worldwide. Such laws and regulatory controls may govern, among other things, the combination, operation, use, implementation and distribution of Bluetooth Products. Examples of such laws and regulatory controls include, but are not limited to, airline regulatory controls, telecommunications regulations, technology transfer controls and health and safety regulations. Each Member is solely responsible for the compliance by their Bluetooth Products with any such laws and regulations and for obtaining any and all required authorizations, permits, or licenses for their Bluetooth Products related to such regulations within the applicable jurisdictions. Each Member acknowledges that nothing in the Specification provides any information or assistance in connection with securing such compliance, authorizations or licenses. NOTHING IN THE SPECIFICATION CREATES ANY WARRANTIES, EITHER EXPRESS OR IMPLIED, REGARDING SUCH LAWS OR REGULATIONS.

ALL LIABILITY, INCLUDING LIABILITY FOR INFRINGEMENT OF ANY INTELLECTUAL PROPERTY RIGHTS OR FOR NONCOMPLIANCE WITH LAWS, RELATING TO USE OF THE SPECIFICATION IS EXPRESSLY DISCLAIMED. To the extent not prohibited by law, in no event will Bluetooth SIG or its Members or their affiliates be liable for any damages, including without limitation, lost revenue, profits, data or programs, or business interruption, or for special, indirect, consequential, incidental or punitive damages, however caused and regardless of the theory of liability, arising out of or related to any furnishing, practicing, modifying, use or the performance or implementation of the contents of this Specification, even if Bluetooth SIG or its Members or their affiliates have been advised of the possibility of such damages. BY USE OF THE SPECIFICATION, EACH MEMBER EXPRESSLY WAIVES ANY CLAIM AGAINST BLUETOOTH SIG AND ITS PROMOTER MEMBERS RELATED TO USE OF THE SPECIFICATION.

If this Specification is an intermediate draft, it is for comment only; no products should be designed based on it for purposes other than interoperable prototype testing; and it does not represent any commitment to release or implement any portion of the intermediate draft, which may be withdrawn, modified or replaced at any time, in the adopted Specification.

Bluetooth SIG reserves the right to adopt any changes or alterations to the Specification it deems necessary or appropriate.

Copyright © 2012 - 2015. The Bluetooth word mark and logos are owned by Bluetooth SIG, Inc. All copyrights in the Bluetooth Specifications themselves are owned by Ericsson AB, Lenovo (Singapore) Pte. Ltd., Intel Corporation, Microsoft Corporation, Apple Inc., Nokia Corporation and Toshiba Corporation. Other third-party brands and names are the property of their respective owners.

v1.0.1

Document Terminology

The Bluetooth SIG has adopted portions of the IEEE Standards Style Manual, which dictates use of the words “shall”, “should”, “may”, and “can” in the development of documentation, as follows:

The word *shall* is used to indicate mandatory requirements strictly to be followed in order to conform to the standard and from which no deviation is permitted (*shall equals is required to*).

The use of the word *must* is deprecated and shall not be used when stating mandatory requirements; *must* is used only to describe unavoidable situations.

The use of the word *will* is deprecated and shall not be used when stating mandatory requirements; *will* is only used in statements of fact.

The word *should* is used to indicate that among several possibilities one is recommended as particularly suitable, without mentioning or excluding others; or that a certain course of action is preferred but not necessarily required; or that (in the negative form) a certain course of action is deprecated but not prohibited (*should equals is recommended that*).

The word *may* is used to indicate a course of action permissible within the limits of the standard (*may equals is permitted*).

The word *can* is used for statements of possibility and capability, whether material, physical, or causal (*can equals is able to*).

The term *Reserved for Future Use (RFU)* is used to indicate Bluetooth SIG assigned values that are reserved by the Bluetooth SIG and are not otherwise available for use by implementations.

Contents

Document Terminology	4
1 Introduction	8
1.1 Profile Dependencies.....	8
1.2 Conformance.....	8
1.3 Bluetooth Specification Release Compatibility.....	8
2 Configuration	9
2.1 Roles.....	9
2.2 Role/Service Relationships	9
2.3 Concurrency Limitations and Restrictions.....	9
2.4 Topology Limitations and Restrictions	10
2.4.1 Topology Restrictions for Low Energy	10
2.4.2 Topology Limitations and Restrictions for BR/EDR.....	10
2.5 Transport Dependencies.....	10
3 CGM Sensor Role Requirements	11
3.1 Incremental CGM Service Requirements	11
3.1.1 Writable GAP Device Name characteristic.....	11
3.1.2 Additional Requirements for Low Energy Transport.....	11
3.1.2.1 Service UUIDs AD Type	11
3.1.2.2 Local Name AD Type.....	11
3.1.2.3 Appearance AD Type.....	11
3.1.2.4 Target Address AD Types.....	12
3.2 Incremental Device Information Service Requirements	12
3.3 Incremental Bond Management Service Requirements	12
4 Collector Role Requirements	13
4.1 GATT Sub-Procedure Requirements	14
4.2 Service Discovery.....	15
4.2.1 CGM Service Discovery	15
4.2.2 Bond Management Service Discovery.....	15
4.2.3 Device Information Service Discovery	15
4.3 Characteristic Discovery	16
4.3.1 CGM Service Characteristic Discovery.....	16
4.3.1.1 CGM Measurement Characteristic	16
4.3.1.2 CGM Feature Characteristic	16
4.3.1.3 CGM Status Characteristic.....	16
4.3.1.4 CGM Session Start Time Characteristic	16
4.3.1.5 CGM Session Run Time Characteristic	16
4.3.1.6 Record Access Control Point Characteristic	16
4.3.1.7 CGM Specific Ops Control Point Characteristic	16

v1.0.1

4.3.2	Bond Management Service Characteristics Discovery	17
4.3.2.1	Bond Management Control Point Characteristic	17
4.3.2.2	Bond Management Features Characteristic.....	17
4.3.3	Device Information Service Characteristics Discovery	17
4.4	CGM Measurement characteristic behavior.....	17
4.5	CGM Feature characteristic behavior	18
4.6	CGM Status characteristic behavior	20
4.7	CGM Session Start Time characteristic behavior.....	20
4.8	CGM Session Run Time characteristic behavior	21
4.9	Record Access Control Point characteristic behavior.....	21
4.9.1	Record Access Control Point Procedure Requirements.....	22
4.9.2	RACP Behavioral Description	23
4.9.2.1	Filter Types.....	24
4.9.2.2	Report Number of Stored Records Procedure	24
4.9.2.3	Delete Stored Records Procedure.....	25
4.9.2.4	Report Stored Records Procedure	25
4.9.2.5	Abort Operation Procedure	26
4.9.2.6	RACP Specific Errors.....	27
4.10	CGM Specific Ops Control Point characteristic behavior	27
4.10.1	CGM Specific Ops Control Point Procedure Requirements.....	27
4.10.2	CGM Specific Ops Control Point Behavioral Description	29
4.10.2.1	CGM Communication Interval Procedure	29
4.10.2.2	Glucose Calibration Procedures.....	29
4.10.2.3	Patient High/Low Alert Procedures.....	30
4.10.2.4	Hypo Alert Procedures.....	31
4.10.2.5	Hyper Alert Procedures.....	31
4.10.2.6	Rate of Increase/Decrease Alert Procedures.....	32
4.10.2.7	Reset Device Specific Alert Procedure	33
4.10.2.8	Start Session Procedure	33
4.10.2.9	Stop Session Procedure	33
4.11	Common Behavior of Control Points (RACP, CGMCP)	33
4.11.1	Procedure Timeout	33
4.11.1.1	CP Procedure Timeout Handling.....	34
4.11.2	General Error Handling	34
4.12	Bond Management Service Characteristics behavior.....	35
4.12.1	Delete Bond of Requesting Device Procedures	35
4.12.2	Delete all Bonds Procedures.....	35
4.12.3	Delete Bond of all except the requesting device Procedures	36
4.12.4	BMSCP Error Handling	36

v1.0.1

4.12.5	BM Feature characteristic behavior	36
4.13	Device Information Service Characteristics behavior	38
5	Connection Establishment	39
5.1	CGM Sensor Connection Establishment	39
5.1.1	Connection Procedure for Unbonded Devices	39
5.1.2	Connection Procedure for Bonded Devices	40
5.1.3	Link Loss Reconnection Procedure	41
5.1.4	Multi-Bond Considerations	41
5.2	Collector Connection Establishment for Low Energy Transport	42
5.2.1	Connection Procedure for Unbonded Devices	42
5.2.2	Connection Procedure for Bonded Devices	43
5.2.3	Link Loss Reconnection Procedure	44
5.2.4	Fast Connection Interval	44
5.3	Connection Establishment for BR/EDR	45
5.3.1	Connection Procedure	45
5.3.1.1	Connection Procedure for Unbonded Devices	45
5.3.1.2	Connection Procedure for bonded Devices	46
5.3.2	Link Loss Reconnection Procedure	46
6	Security Considerations	47
6.1	CGM Sensor Security Considerations for Low Energy	47
6.2	Collector Security Considerations for Low Energy	47
6.3	Security Considerations for BR/EDR	47
7	Generic Access Profile for BR/EDR	48
7.1	Modes	48
7.2	Idle Mode Procedures	48
8	Acronyms and Abbreviations	49
9	References	50
Appendix A	Example of Record Access Control Point Usage	51

v1.0.1

1 Introduction

The CGM Profile is used to enable a device to obtain glucose measurement and other data from a CGM Sensor that exposes the CGM Service [1].

1.1 Profile Dependencies

This profile requires the Generic Attribute Profile (GATT).

1.2 Conformance

If conformance to this profile is claimed, all capabilities indicated as mandatory for this profile shall be supported in the specified manner (process-mandatory). This also applies for all optional and conditional capabilities for which support is indicated. All mandatory capabilities, and optional and conditional capabilities for which support is indicated, are subject to verification as part of the Bluetooth qualification program.

1.3 Bluetooth Specification Release Compatibility

This specification is compatible with any Bluetooth Core Specification [2] that includes the Generic Attribute Profile (GATT).

v1.0.1

2 Configuration

2.1 Roles

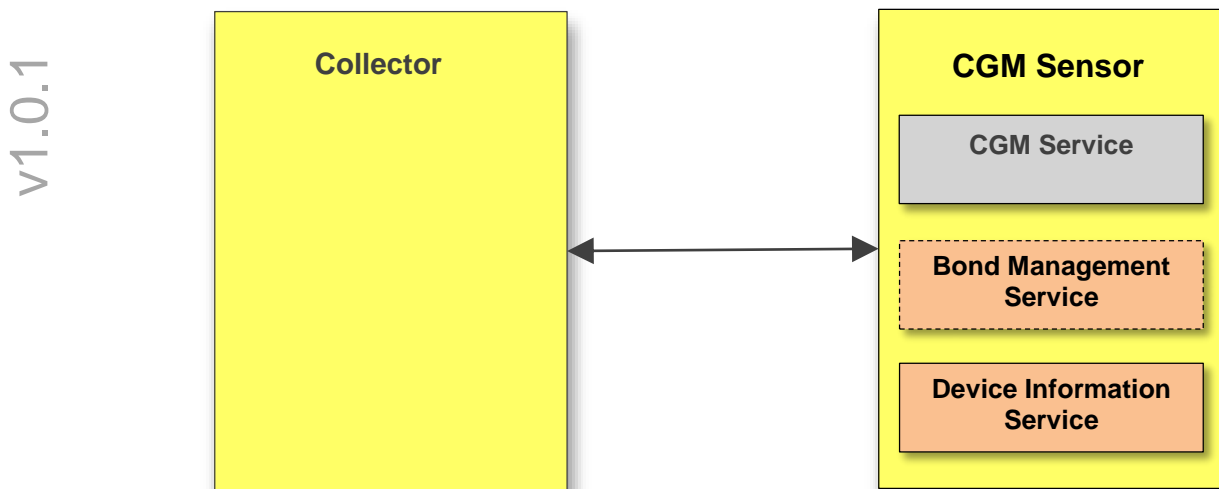
The profile defines two roles: CGM Sensor and Collector. The CGM Sensor is the device that measures the Glucose level concentration and the Collector is the device that receives the Glucose measurement and other related data from a CGM Sensor.

- The CGM Sensor shall be a GATT Server.
- The Collector shall be a GATT Client.

At any given time, a CGM Sensor shall be connected to only one Collector

2.2 Role/Service Relationships

The following diagram shows the relationships between service and profile roles.



Note: Profile roles are represented by yellow boxes and services are represented by orange boxes.

A CGM Sensor instantiates the CGM Service [1], the Device Information Service, [3] and optionally the Bond Management Service [8].

2.3 Concurrency Limitations and Restrictions

There are no concurrency limitations or restrictions for the Collector or CGM Sensor roles imposed by this profile.

2.4 Topology Limitations and Restrictions

2.4.1 Topology Restrictions for Low Energy

This section describes topology limitations and restrictions when the profile is to be used over Low Energy transport.

The CGM Sensor shall use the GAP Peripheral role.

The Collector shall use the GAP Central role.

2.4.2 Topology Limitations and Restrictions for BR/EDR

This section describes topology limitations and restrictions when the profile is to be used over BR/EDR transport.

There are no fixed master or slave roles in the profile.

2.5 Transport Dependencies

There are no transport restrictions imposed by this profile specification.

Where the term BR/EDR is used throughout this document, this also includes the use of AMP.

Since IEEE 11073 Personal Health Device standards represent the dominant data standard for personal healthcare devices, it is recommended to use the Health Device Profile [4] for BR/EDR.

3 CGM Sensor Role Requirements

The CGM Sensor shall instantiate one and only one CGM Service [1].

The CGM Sensor shall instantiate the Device Information Service [3].

The CGM Sensor may instantiate the Bond Management Service [8].

Service	CGM Sensor
CGM Service	M
Bond Management Service	C1
Device Information Service	M

Table 3.1: CGM Sensor Service Requirements

C1: Mandatory if multiple bonds are supported by server, otherwise optional.

See Section 5.1 and Section 6.1 for additional requirements for the CGM Sensor role.

3.1 Incremental CGM Service Requirements

3.1.1 Writable GAP Device Name characteristic

The CGM Sensor may support the write property for the Device Name characteristic in order to allow a Collector to write a device name to the CGM Sensor.

3.1.2 Additional Requirements for Low Energy Transport

This section describes additional CGM Sensor requirements and recommendations beyond those defined in the CGM Service when using this profile over Low Energy transport.

3.1.2.1 Service UUIDs AD Type

While in a GAP Discoverable Mode for initial connection to a Collector, the CGM Sensor should include the «CGM Service» UUID defined in [5] in the Service UUIDs AD type field of the Advertising Data. This enhances the user experience as a CGM Sensor may be identified by the Collector before initiating a connection.

3.1.2.2 Local Name AD Type

For enhanced user experience, a CGM Sensor should include the Local Name (containing either the complete or shortened value of the Device Name characteristic as defined in [2]) in its Advertising Data or Scan Response Data.

3.1.2.3 Appearance AD Type

For enhanced user experience, a CGM Sensor should include the value of the Appearance characteristic defined in [3] in its Advertising data or Scan Response data.

v1.0.1

3.1.2.4 Target Address AD Types

For enhanced user experience, a CGM Sensor may include either the Public Target Address AD Type or Random Target Address AD Type (see Section 5.1.4) in its Advertising Data or Scan Response Data.

In the following sections, the words “a Target Address AD Type” are intended to refer to either of the defined Target Address AD Types.

3.2 Incremental Device Information Service Requirements

The table below shows additional requirements and recommendations beyond those defined in the Device Information Service.

Device Information Service Characteristic	Requirement
Manufacturer Name String	M
Model Number String	M
System ID	M

Table 3.2: Device Information Service Requirements

Characteristics in this service may be transcoded by the Collector for use in an ISO/IEEE 11073 ecosystem. See the Personal Health Devices Transcoding White Paper [6] for more information. Since strings in this service are encoded as UTF-8, and ISO/IEEE 11073-20601a [7] specifies that strings are encoded as ASCII printable characters (a subset of UTF-8), characters used in string characteristics that are to be transcoded for use in an ISO/IEEE 11073 ecosystem shall be restricted to the printable ASCII character set in order to ensure that the strings can be correctly displayed.

If the ISO/IEEE 11073-20601 specification is updated in the future to include UTF-8 support, implementers should consider the impact of using non-ASCII characters on backward compatibility.

Note: The Personal Health Devices Transcoding White Paper [6] recommends that characters outside of the printable ASCII range are translated to characters inside of the printable ASCII range as appropriate.

3.3 Incremental Bond Management Service Requirements

The table below shows additional requirements beyond those defined in the Bond Management Service.

Bond Management Service Characteristic	Requirement
Bond Management Control Point	M
Bond Management Features	M

Table 3.3: Bond Management Service Requirements

v1.0.1

4 Collector Role Requirements

The Collector shall support the CGM Service [1].

The Collector may support the Bond Management Service [8].

The Collector may support the Device Information Service [3].

Service	Collector
CGM Service	M
Bond Management Service	C.1
Device Information Service	O

Table 4.1: Collector Service Requirements

C.1: Mandatory if Multiple Bond feature is supported, otherwise optional

This section describes the profile procedure requirements for a Collector.

Profile Requirement	Section	Support in Collector
Service Discovery	4.2	M
- CGM Service Discovery	4.2.1	M
- Device Information Service Discovery	4.2.3	O
- Bond Management Service Discovery	4.2.2	C.1
Characteristic Discovery	4.3	M
- CGM Service Characteristic Discovery	4.3.1	M
- Device Information Service Characteristic Discovery	4.3.3	O
- Bond Management Service Characteristic Discovery	4.3.2	C.1
CGM Measurement	4.3.1.1	M
CGM Feature	4.3.1.2	M
CGM Status	4.3.1.3	M
CGM Session Start Time	4.3.1.4	M
CGM Session Run Time	4.3.1.5	M
Record Access Control Point	4.3.1.6	M
Report Stored Records	4.3.1.6	M
Delete Stored Records	4.3.1.6	O
Abort Operation	4.3.1.6	O
Report Number of Stored Records	4.3.1.6	O
CGM Specific Ops Control Point	4.10	M

v1.0.1

Profile Requirement	Section	Support in Collector
Set CGM Communication Interval	4.10.2.1	O
Get CGM Communication Interval	4.10.2.1	M
Set Glucose Calibration value	4.10.2.2	C.2
Get Glucose Calibration Value	4.10.2.2	C.2
Set Patient High Alert Level	4.10.2.3	O
Get Patient High Alert Level	4.10.2.3	O
Set Patient Low Alert Level	4.10.2.3	O
Get Patient Low Alert Level	4.10.2.3	O
Set Hypo Alert Level	4.10.2.4	O
Get Hypo Alert Level	4.10.2.4	O
Set Hyper Alert Level	4.10.2.5	O
Get Hyper Alert Level	4.10.2.5	O
Set Rate of Decrease Alert Level	4.10.2.6	O
Get Rate of Decrease Alert Level	4.10.2.6	O
Set Rate of Increase Alert Level	4.10.2.6	O
Get Rate of Increase Alert Level	4.10.2.6	O
Reset Device Specific Alert	4.10.2.7	C.3
Start the Session	4.10.2.8	O
Stop the Session	4.10.2.9	O
Bond Management Control Point	4.3.2.1	C.1
Bond Management Feature	4.3.2.2	C.1

Table 4.2: Collector Requirements

- C.1: Mandatory if Multiple Bond feature is supported, otherwise optional
 C.2: Mandatory if the Calibration feature is supported, otherwise optional
 C.3: Mandatory if the Device Specific Alert feature is supported, otherwise optional

4.1 GATT Sub-Procedure Requirements

Requirements in this section represent a minimum set of requirements for a Collector (Client). Other GATT sub-procedures may be used if supported by both Client and Server.

The table below summarizes additional GATT sub-procedure requirements beyond those required by all GATT Clients.

GATT Sub-Procedure	Collector (Client) Requirements
Discover All Primary Services	C1
Discover Primary Services by Service UUID	C1

GATT Sub-Procedure	Collector (Client) Requirements
Discover All Characteristics of a Service	C2
Discover Characteristics by UUID	C2
Discover All Characteristic Descriptors	M
Notifications	M
Indications	M
Read Characteristic Value	M
Write Characteristic Value	M
Reliable Writes	C.3
Write Long Characteristic Values	C.3
Read Characteristic Descriptors	M
Write Characteristic Descriptors	M

Table 4.3: Additional GATT Sub-Procedure Requirements

C.1: Mandatory to support at least one of these service discovery sub-procedures.

C.2: Mandatory to support at least one of these characteristic discovery sub-procedures.

C.3: Mandatory if Bond Management Service is supported

v1.0.1

4.2 Service Discovery

When using the Low Energy transport, the Collector shall perform primary service discovery using either the GATT *Discover All Primary Services* sub-procedure or the GATT *Discover Primary Services by Service UUID* sub-procedure. Recommended fast connection parameters and procedures for connection establishment are defined in Section 5.2.4.

When using BR/EDR transport, the Collector shall perform service discovery by retrieving the SDP record of the CGM Service [1]. The SDP record can be found in section 4 of [1].

4.2.1 CGM Service Discovery

The Collector shall discover the CGM Service.

4.2.2 Bond Management Service Discovery

The Collector may discover the Bond Management Service.

4.2.3 Device Information Service Discovery

The Collector may discover the Device Information Service.

4.3 Characteristic Discovery

As required by GATT, the Collector must be tolerant of additional optional characteristics in the service records of services used with this profile.

4.3.1 CGM Service Characteristic Discovery

The Collector shall perform either the GATT *Discover All Characteristics of a Service* sub-procedure or the GATT *Discover Characteristics by UUID* sub-procedure in order to discover the characteristics of the service.

The Collector shall perform the GATT *Discover All Characteristic Descriptors* sub-procedure in order to discover the characteristic descriptors described in the following sections.

4.3.1.1 CGM Measurement Characteristic

The Collector shall discover the CGM Measurement characteristic.

The Collector shall discover the *Client Characteristic Configuration* descriptor of the CGM Measurement characteristic.

4.3.1.2 CGM Feature Characteristic

The Collector shall discover the CGM Feature characteristic.

4.3.1.3 CGM Status Characteristic

The Collector shall discover the CGM Status characteristic.

4.3.1.4 CGM Session Start Time Characteristic

The Collector shall discover the CGM Session Start Time characteristic.

4.3.1.5 CGM Session Run Time Characteristic

The Collector shall discover the CGM Run Time characteristic.

4.3.1.6 Record Access Control Point Characteristic

The Collector shall discover the Record Access Control Point characteristic.

The Collector shall discover the *Client Characteristic Configuration* descriptor of the Record Access Control Point characteristic.

4.3.1.7 CGM Specific Ops Control Point Characteristic

The Collector shall discover the CGM Specific Ops Control Point characteristic.

The Collector shall discover the *Client Characteristic Configuration* descriptor of the CGM Specific Ops Control Point characteristic.

4.3.2 Bond Management Service Characteristics Discovery

In order for the Collector to discover the characteristics of the Bond Management Service, it may use either the GATT *Discover All Characteristics of a Service* sub-procedure or the GATT *Discover Characteristics by UUID* sub-procedure to discover all characteristics of the service.

4.3.2.1 Bond Management Control Point Characteristic

The Collector may discover the Bond Management Control Point characteristic of the Bond Management Service.

4.3.2.2 Bond Management Features Characteristic

The Collector may discover the Bond Management Feature characteristic of the Bond Management Service.

4.3.3 Device Information Service Characteristics Discovery

The Collector may discover the characteristics of the Device Information Service.

In order for the Collector to discover the characteristics of the Device Information Service, it may use either the GATT *Discover All Characteristics of a Service* sub-procedure or the GATT *Discover Characteristics by UUID* sub-procedure to discover all characteristics of the service.

4.4 CGM Measurement Characteristic Behavior

The Collector shall control the configuration of notifications (i.e., via the *Client Characteristic Configuration* descriptor) of the CGM Measurement characteristic.

The CGM Measurement characteristic is a variable length structure. The Collector shall be able to receive notifications of the CGM Measurement characteristic from the CGM Sensor at regular intervals. The collector shall be able to receive more than one characteristic value in a single notification; the size of each record within the notification is contained in the first octet of the record.

When a Collector requires a connection to a CGM Sensor to receive CGM Measurements, it shall follow the connection procedures described in Section 5.

The Collector shall determine the features supported by the CGM Sensor by reading the CGM Feature characteristic (see Section 4.5).

If configured, the Collector may alert the user when CGM Measurements are no longer received (e.g., due to link loss). Once the data is again received (e.g., the link is restored), the Collector may fetch the missing data and continue in its normal way of data display.

When a Collector requires dedicated CGM measurement data, it shall follow the Record Access Control Point procedures described in Section 4.9.

If the Collector receives a CGM Measurement characteristic with bits or values of the optional Sensor Status Annunciation field that are designated as Reserved for Future Use (RFU) in [5], it shall ignore those bits and continue to process the other fields of the CGM Measurement characteristic normally.

4.5 CGM Feature Characteristic Behavior

The Collector shall read the CGM Feature characteristic to determine the supported features of the CGM Sensor in order to interpret the bits in the Sensor Status Annunciation field of the CGM Measurement characteristic.

If the E2E-CRC Supported bit is set to 1 (True), some characteristics contain a CRC-field the Collector shall calculate when writing to the characteristic and may verify CRC when reading. Otherwise the CRC-calculation is not supported and the fields are not included except the CGM Feature characteristic.

If the Calibration Supported bit is set to 0 (False), the Collector shall ignore the Calibration Required bit of the Sensor Status Annunciation field of the CGM Measurement and the CGM Status characteristic. Otherwise the Collector may initiate the calibration of the CGM Sensor, see Section 4.10.2.2.

If the Patient High/Low Alert Supported bit is set to 0 (False), the Collector shall ignore the Sensor Result Higher Than Patient High Level bit and the Sensor Result Lower Than Patient Low Level bit of the Sensor Status Annunciation field of the CGM Measurement and the CGM Status characteristic. Otherwise the Collector may set the threshold levels, see Section 4.10.2.3.

If the Hypo Alert Supported bit is set to 0 (False), the Collector shall ignore the Sensor Result Lower Than Hypo Level bit of the Sensor Status Annunciation field of the CGM Measurement and the CGM Status characteristic. Otherwise the Collector may set the appropriate level as described in Section 4.10.2.4.

If the Hyper Alert Supported bit is set to 0 (False), the Collector shall ignore the Sensor Result Higher Than Hyper Level bit of the Sensor Status Annunciation field of the CGM Measurement and the CGM Status characteristic. Otherwise the Collector may set the appropriate level as described in Section 4.10.2.5.

If the Rate Of Increase/Decrease Alert Supported bit is set to 0 (False), the Collector shall ignore the Sensor Rate Of Increase Exceeded bit and the Sensor Rate Of Decrease Exceeded bit of the Sensor Status Annunciation field of the CGM Measurement and the CGM Status characteristic. Otherwise the Collector may set the appropriate level as described in Section 4.10.2.6.

If the Device Specific Alert Supported bit is set to 0 (False), the Collector shall ignore the Device Specific Alert bit of the Sensor Status Annunciation field of the CGM Measurement and the

CGM Status characteristic. Otherwise the Collector may reset the Device Specific Alert as described in Section 4.10.2.7.

If the Sensor Malfunction Detection Supported bit is set to 0 (False), the Collector shall ignore the Sensor Malfunction bit of the Sensor Status Annunciation field of the CGM Measurement and the CGM Status characteristic. Otherwise the Collector may discard the measurement.

If the Sensor Temperature High-Low Detection Supported bit is set to 0 (False), the Collector shall ignore the Sensor Temperature Too High for Valid Test/Result at Time of Measurement bit and the Sensor Temperature Too Low for Valid Test/Result at Time of Measurement bit of the Sensor Status Annunciation field of the CGM Measurement and the CGM Status characteristic. Otherwise the Collector may discard the measurement.

If the Sensor Result High-Low Detection Supported bit is set to 0 (False), the Collector shall ignore the Sensor Result Higher Than the Device Can Process bit and the Sensor Result Lower Than the Device Can Process bit of the Sensor Status Annunciation field of the CGM Measurement and the CGM Status characteristic. Otherwise the Collector may discard the measurement. If the Low Battery Detection Supported bit is set to 0 (False), the Collector shall ignore the Device Battery Low bit of the Sensor Status Annunciation field of the CGM Measurement and the CGM Status characteristic. Otherwise the Collector may discard the measurement and/or may show the associated state on its UI.

If the Sensor Type Error Detection Supported bit is set to 0 (False), the Collector shall ignore the Sensor Type Incorrect For Device bit of the Sensor Status Annunciation field of the CGM Measurement and the CGM Status characteristic. Otherwise the Collector may stop the CGM session as described in Section 4.10.2.9.

If the General Device Fault Supported bit is set to 0 (False), the Collector shall ignore the General Device Fault Has Occurred in the Sensor bit of the Sensor Status Annunciation field of the CGM Measurement and the CGM Status characteristic. Otherwise the Collector may discard the measurement and/or may show the associated state on his UI.

If the Multiple Bond Supported bit is set to 0 (False), the Collector can assume that the CGM Sensor supports only a single bond. Otherwise the Collector can assume that the CGM Sensor supports multiple bonds.

If the Multiple sessions Supported bit is set to 0 (False), the Collector can assume that the CGM Sensor supports only a single CGM session. Otherwise the Collector can assume that the CGM Sensor supports multiple CGM sessions.

If the CGM Trend Information Supported bit is set to 1 (True), the CGM Measurement characteristic may contain a CGM Trend Information field. Otherwise, it is unnecessary for the Collector to expect a CGM Trend value.

If the CGM Quality Supported bit is set to 1 (True), the CGM Measurement characteristic may contain a CGM Quality field. Otherwise, it is unnecessary for the Collector to expect a CGM Quality value.

Additionally, the CGM Feature characteristic states the sample type and the location of the CGM measurement in the Type-Sample Location field. The Collector may use this information within its UI.

Whether a bit is defined as static during the lifetime of the device (i.e., static permanently or until Service Changed is indicated) or static during a connection, it is defined on a bit-by-bit basis in Table 3.2 of [1] (Static Requirements for CGM Feature Bits).

If the Collector reads CGM Feature characteristic bits that are set and yet are designated as Reserved for Future Use (RFU) in [5], it shall ignore those bits and continue to operate normally as if the bits were not set.

4.6 CGM Status Characteristic Behavior

The Collector may read the CGM Status characteristic to determine the current status of the CGM Sensor. The CGM Status allows the Collector to read the status from the CGM Sensor at any time, particularly when the CGM measurement is not running and the status cannot be obtained in the measurement result in the Status Annunciation Field.

It also allows the Collector to read the actual relative time difference to the session start time.

If the CGM Sensor supports E2E-CRC, the Collector may check the validity of CGM Status by checking the CRC calculated over all fields; see Section 3.11 in [1] for more details. What the Collector does if a CRC error is detected is left to the implementation.

If the Collector reads CGM Status characteristic bits that are set and yet are designated as Reserved for Future Use (RFU) in [5], it shall ignore those bits and continue to operate normally as if the bits were not set.

4.7 CGM Session Start Time Characteristic Behavior

The Collector shall send its actual time (user facing time) to the CGM Sensor to enable the CGM Sensor to calculate its Session Start Time. This should be done at least once after a Session is started.

The Collector may read the Session Start Time characteristic to determine the CGM Sensors measurement starting time. This time is the base offset for every measurement characteristic that is sent from the CGM Sensor; thus the Session Start time may be the common base time for the system (i.e., also for other Collectors).

The Session Start Time field is in the same format and units as the Date Time characteristic defined in [5].

The Time Zone field is in the same format and units as the Time Zone characteristic defined in [5].

The DST Offset field is in the same format and units as the DST Offset characteristic defined in [5].

If the Time Zone and DST Offset is not known, the Collector shall use the predetermined values defined in [5] for this purpose.

If the CGM Sensor supports E2E-CRC, the Collector may check the validity of CGM Session Start Time by checking the CRC calculated over all fields; see section 3.11 in [1] for more details. What the Collector does if a CRC error is detected is left to the implementation.

4.8 CGM Session Run Time Characteristic Behavior

The Collector may read the CGM Session Run Time characteristic to determine the time the CGM Session will run. This time is static for most devices but could be dynamically corrected in future devices. The Collector may check the CGM Session Run Time in intervals to warn the user of an unexpected end of the CGM session.

If the CGM Sensor supports E2E-CRC, the Collector may check the validity of CGM Session Run Time by checking the CRC calculated over all fields; see Section 3.11 in [1] for more details. What the Collector does if a CRC error is detected is left to the implementation.

4.9 Record Access Control Point Characteristic Behavior

The Record Access Control Point characteristic defined in [5] is reused.

Before performing any Record Access Control Point procedure, the Collector shall configure the Record Access Control Point (RACP) characteristic for indications (i.e., via the *Client Characteristic Configuration* descriptor).

The Collector may perform a write to the Record Access Control Point to request a desired procedure. A procedure begins when the Collector writes to the RACP to perform some desired action and ends when either a *Response Code* or *Number of Stored Records Response* RACP indication is received by the Collector.

If the procedure performed is the *Report Stored Records* procedure, the procedure may contain one or more CGM Measurement characteristic notifications between the write to the RACP characteristic that began the procedure and the *Response Code* RACP indication that ends the procedure.

If the Collector attempts to perform any defined Record Access Control Point procedure other than the *Abort Operation* procedure before a previous procedure is complete and receives a

GATT Error Response with the error code set to *Procedure Already in Progress*, the Collector shall wait until the current RACP procedure completes before starting a new procedure.

If the Collector attempts to request any defined Record Access Control Point procedure before it has configured the CGM Measurement characteristic for notifications and the Record Access Control Point characteristic for indications (all via the appropriate *Client Characteristic Configuration* descriptor) as required in previous sections, then the CGM Sensor will transmit a GATT Error Response with the error code set to *Client Characteristic Configuration Descriptor Improperly Configured*. This means that the Collector has not configured the CGM Sensor correctly. The Collector shall configure these characteristics for notifications or indications where appropriate, as defined by other portions of this document.

See Section 4.10 for an example of how the RACP can be used in the context of the CGM Profile.

4.9.1 Record Access Control Point Procedure Requirements

Table 4.4 below shows the requirements for the Record Access Control Point procedures (Op Codes, Operators and Operands) in the context of this profile:

Op Code	Op Code Requirement	Operator	Operator Requirement	Operand		Operand Requirement
				Filter Type	Filter Parameters	
Report Stored Records	M	All records	M	No Operand Used		N/A
		Less than or equal to	O	Time Offset	<maximum filter value>	C.1
		Greater than or equal to	M	Time Offset	<minimum filter value>	M
		Within range of (inclusive)	O	Time Offset	<minimum filter value>, <maximum filter value>	C.1
		First record	O	No Operand Used		N/A
		Last record	O	No Operand Used		N/A
Delete Stored Records	O	All records	C.2	No Operand Used		N/A
		Less than or equal to	O	Time Offset	<maximum filter value>	C.1
		Greater than or equal to	O	Time Offset	<minimum filter value>	C.1

v1.0.1

Op Code	Op Code Requirement	Operator	Operator Requirement	Operand		Operand Requirement
				Filter Type	Filter Parameters	
		Within range of (inclusive)	O	Time Offset	<minimum filter value>, <maximum filter value>	C.1
		First record	O	No Operand Used		N/A
		Last record	O	No Operand Used		N/A
Abort Operation	M	Null (0x00)	M	No Operand Used		N/A
Report Number of Stored Records	M	All records	M	No Operand Used		N/A
		Less than or equal to	O	Time Offset	<maximum filter value>	C.1
		Greater than or equal to	M	Time Offset	<minimum filter value>	M
		Within range of (inclusive)	O	Time Offset	<minimum filter value>, <maximum filter value>	C.1
		First record	O	No Operand Used		N/A
		Last record	O	No Operand Used		N/A

Table 4.4: RACP Procedure Requirements

- C.1 If this Operator is supported, this Operand is mandatory for this Operator. See also Note 1.
 C.2 If this Op Code is supported, this Operator is mandatory for this Op Code. See also Note 2.

Notes:

- Support for a given Operand for one Op Code and Operator combination does not imply support of that Operand for other Op Code and Operator combinations.
- Support for a given Operator for one Op Code does not imply support of that Operator for other Op Codes.
- Where a filter type and filter parameters are used, the byte order for the Operand is specified [1].

4.9.2 RACP Behavioral Description

The Collector shall write to the RACP characteristic using one of the supported Op Codes to request a CGM Sensor to perform a procedure (see [5]). This shall include an Operator and Operand that is valid within the context of that Op Code as defined in [1].

The procedures including the use of Filter Types are described in the following sections.

v1.0.1

The Collector shall be tolerant of the fact that, for example, the CGM Sensor may add measurements *while* RACP procedures are taking place and also *between* two different RACP procedures.

Example:

The Collector may perform the *Request Number of Stored Records* procedure with the Operator set to *All Stored Records*, to get the total number of records currently stored by the CGM Sensor. However, if the Collector then performs a *Report Stored Records* procedure with the Procedure Operator set to *All Stored Records*, it shall be tolerant of receiving a different number of records from this procedure than the CGM Sensor reported having stored in the response to the *Report Number of Stored Records*. This is due to the fact that the CGM Sensor may have taken new measurements in the time between the *Request Number of Stored Records* procedure and the *Report Stored Records* procedure. This is used as an example, but the Collector shall be tolerant of this happening with any RACP procedure.

If the CGM Sensor supports multiple bonds, a Collector shall be tolerant of the fact that other Collectors may alter the contents of the CGM Sensor's measurement database (e.g., Collector #2 may delete records from the CGM Sensor's database that Collector #1 will then never be able to retrieve).

The handling of multiple bonds is vendor-specific (e.g., a CGM Sensor may only allow certain Collectors, such as a doctor's computer, to use the Delete Store Records procedure).

4.9.2.1 Filter Types

Certain RACP procedures use a Filter Type that is used to determine the portion of the stored records on the CGM Sensor that the procedure applies to. The format of the Filter Type and the RACP procedures that have a Filter Type operand is defined in [1]. The Collector may filter using the *Time Offset* filter. The *Time Offset* filter is used when a procedure should apply to a specific CGM Measurement record or a range of CGM Measurement records. The Time Offset Number that is used is obtained from the Time Offset field in the CGM Measurement characteristic.

4.9.2.2 Report Number of Stored Records Procedure

To request the number of stored records from a CGM Sensor, the Collector shall use the *Report Number of Stored Records* procedure. To receive the number based on filter criteria, an appropriate Operator and Operand shall be used. Refer to [1] for Operand requirements when used with a specific Operator and note that in some cases, no Operand is used.

The Collector shall wait for the *Number of Stored Records Response* RACP indication containing the number of stored records available in the CGM Sensor as per the request. The *Number of Stored Records Response* RACP indication ends the *Report Number of Stored Records* procedure. In special circumstances, a Collector may request an abort of this procedure. See Section 4.9.2.5 for details on that procedure.

If after requesting the number of stored records, the Collector receives a *Response Code* RACP indication with a *Response Code Value* that represents an error condition, see Section 4.11.2 for general error handling procedures.

The value returned by the Number of Stored Records procedure is intended to be used either for the user interface on the Collector or to enable the Collector to acquire an estimate of the number of records it might receive to ensure it has sufficient resources. The Collector should not rely on this value as a means of determining if new records are available from the CGM Sensor. The Collector should always request new records by filtering with a Time Offset field.

4.9.2.3 Delete Stored Records Procedure

To request deletion of stored records within the CGM Sensor, the Collector shall use the *Delete Stored Records* procedure. To delete a selected set of stored records based on filter criteria, an appropriate Operator and Operand shall be used. Refer to [1] for Operand requirements when used with a specific Operator and note that in some cases, no Operand is used.

The Collector shall wait for the *Response Code* RACP Indication with the *Response Code Value* set to *Success* indicating successful deletion of records as per the request or for the procedure to time out according to the procedure time out operation described in Section 4.11.1. In special circumstances, a Collector may require an abort of this procedure. See Section 4.9.2.5 for details on the Abort Operation procedure.

If after requesting the deletion of stored records, the Collector receives a *Response Code* RACP indication with a *Response Code Value* that represents an error condition, see Section 4.11.2 for general error handling procedures.

4.9.2.4 Report Stored Records Procedure

To request the transfer of stored records from the CGM Sensor, the Collector shall use the *Report Stored Records* procedure on the “Record Access Control Point”. To receive a selected set of stored records based on filter criteria, an appropriate Operator and Operand shall be used. Refer to [1] for Operand requirements when used with a specific Operator and note that in some cases, no Operand is used. In special circumstances, a Collector may require an abort of this procedure. See Section 4.9.2.5 for details on that procedure.

Once all patient records for a given request have been successfully indicated by the CGM Sensor, the CGM Sensor will send a *Response Code* RACP indication with the *Response Code Value* set to *Success*.

The Collector may also receive a *Response Code* RACP indication with the *Response Code Value* representing an error condition that occurred in processing the request. A description of specific error conditions and recommended procedures is described below. For descriptions of general error conditions, see Section 4.11.2.

If after requesting stored records, the Collector receives a *Response Code* RACP indication with the *Response Code Value* set to *No Records found*, this indicates that the CGM Sensor does not have any stored records that meet the specified criteria.

If after requesting and receiving stored records, the Collector receives a *Response Code* RACP indication with the *Response Code Value* set to *Procedure not completed*, this indicates that the CGM Sensor was required to interrupt its data transfer before completion for an unspecified reason. If this occurs, the Collector should reattempt the data transfer using the same Op Code and Operator, but should modify the filter criteria in the Operand such that data already successfully received does not need to be retransmitted.

If a condition arises where a Collector is no longer able to receive the requested data, the Collector may request to abort the data transfer as described in Section 4.9.2.5.

4.9.2.5 Abort Operation Procedure

To abort a procedure that a Collector initiated, the Collector shall use the *Abort Operation* Op Code with the Operator set to *Null* and no Operand.

The Collector shall then wait for the *Response Code* RACP indication with the *Response Code Value* set to *Success* indicating successful aborting of the procedure or for the procedure to time out according to the procedure time out operation described in Section 4.11.1. Although CGM Sensors are required to stop the data transfer after they have sent the *Response Code Value* of *Success*, they may still have some records queued for transfer. These will be sent and require acknowledgement from the Collector before the transfer will be fully terminated. The Collector may choose to process or ignore these additional records but shall be tolerant of this lag in the termination of the transfer.

The *Request Op Code* in the Operand of the *Response Code* RACP indication is used to determine if a *Response Code* RACP indication is received in response to an *Abort Operation* procedure, or the procedure that the *Abort Operation* is trying to abort. If the *Abort Operation* procedure is completed successfully, then the CGM Sensor shall send the *Response Code* RACP indication with the *Request Op Code* in the Operand set to *Abort Operation*, and shall not send any *Response Code* RACP indication for the aborted procedure.

The Collector may also receive a *Response Code* RACP indication with the *Request Op Code* in the Operand set to *Abort Operation* and the *Response Code Value* representing an error condition that occurred in processing the request. Though in practice not all *Response Code Values* may be returned for an *Abort Operation* procedure, a Collector shall be able to handle receiving all defined *Response Code Values* in response this procedure. A description of specific error conditions and recommended procedures is described below. For descriptions of general error conditions, see Section 4.11.2.

If after requesting the abort, the Collector receives a *Response Code* RACP indication with the *Request Op Code* in the Operand set to *Abort Operation* and the *Response Code Value* set to

Abort Unsuccessful, this indicates that the CGM Sensor is unable to process the abort (see RACP in [5]). How the Collector handles this situation is left to the implementation.

4.9.2.6 RACP Specific Errors

If the Collector writes an Operator to the Record Access Control Point characteristic that is invalid, it will receive a *Response Code* RACP indication with the *Response Code Value* set to *Invalid Operator*.

If the Collector writes an Operator to the Record Access Control Point characteristic that is not supported by the CGM Sensor, it will receive a *Response Code* RACP indication with the *Response Code Value* set to *Operator not supported*.

If the Collector receives a *Response Code* RACP indication with the *Response Code Value* set to *Procedure not completed*, this indicates that the CGM Sensor is unable to complete the procedure for some unknown reason, and the procedure shall be considered to have failed.

If the Collector writes a Filter Type within an Operand to the Record Access Control Point characteristic that is not supported by the CGM Sensor, it will receive a *Response Code* RACP indication with the *Response Code Value* set to *Operand Not Supported*.

4.10 CGM Specific Ops Control Point Characteristic Behavior

Before performing any CGM Specific Ops Control Point procedure, the Collector shall configure the CGM Specific Ops Control Point (CGMCP) characteristic for indications (i.e., via the *Client Characteristic Configuration* descriptor).

The Collector may perform a write to the CGM Specific Ops Control Point to request a desired procedure. A procedure begins when the Collector writes the CGMCP to perform some desired action and ends when a *Response Code* indication is received by the Collector.

4.10.1 CGM Specific Ops Control Point Procedure Requirements

The table below shows the requirements for the CGM Specific Ops Control Point (CGMCP) procedures in the context of this profile:

Op Code	Requirement	Operand
Set CGM communication interval	M	UINT8 containing Communication Interval in minutes
Get CGM communication interval	M	N.A.
Set Glucose Calibration value	C.1	Operand as defined in [5]
Get Glucose Calibration value	C.1	Operand as defined in [5]
Set Patient High Alert Level	C.2	SFLOAT containing level in mg/dL

v1.0.1

Op Code	Requirement	Operand
Get Patient High Alert Level	C.2	N.A.
Set Patient Low Alert Level	C.2	SFLOAT containing level in mg/dL
Get Patient Low Alert Level	C.2	N.A
Set Hypo Alert Level	C.3	SFLOAT containing level in mg/dL
Get Hypo Alert Level	C.4	N.A
Set Hyper Alert Level	C.5	SFLOAT containing level in mg/dL
Get Hyper Alert Level	C.6	N.A
Set Rate of Decrease Alert Level	C.7	SFLOAT containing level in mg/dL/min
Get Rate of Decrease Alert Level	C.8	N.A
Set Rate of Decrease Alert Level	C.7	SFLOAT containing level in mg/dL/min
Get Rate of Decrease Alert Level	C.8	N.A
Reset Device Specific Alert	C,9	N.A
Start Session	C.10	N.A
Stop Session	C.10	N.A

Table 4.5: CGMCP Requirements for Collector

- C.1: If Calibration Supported bit in CGM Feature characteristic is set to 1, this Op code is mandatory otherwise excluded
- C.2: If Patient High/Low Alert Supported bit in CGM Feature characteristic is set to 1, this Op Code is optional otherwise excluded
- C.3: If Hypo Alert Supported bit in CGM Feature characteristic is set to 1, this Op code is optional otherwise excluded
- C.4: If Hypo Alert Supported bit in CGM Feature characteristic is set to 1, this Op code is mandatory otherwise excluded
- C.5: If Hyper Alert Supported bit in CGM Feature characteristic is set to 1, this Op code is optional otherwise excluded
- C.6: If Hyper Alert Supported bit in CGM Feature characteristic is set to 1, this Op code is mandatory otherwise excluded
- C.7: If Rate of Increase/Decrease Alert Supported bit in CGM Feature characteristic is set to 1, this Op code is optional otherwise excluded
- C.8: If Rate of Increase/Decrease Alert Supported bit in CGM Feature characteristic is set to 1, this Op code is mandatory otherwise excluded
- C.9: If Device Specific Alert Supported bit in CGM Feature characteristic is set to 1, this Op code is mandatory otherwise excluded

v1.0.1

C.10: If Multiple Session Supported bit in CGM Feature characteristic is set to 1, this Op Code is mandatory otherwise optional

4.10.2 CGM Specific Ops Control Point Behavioral Description

The Collector shall write to CGM Specific Ops Control Point characteristic using one of the supported Op Codes in [Table 4.5](#) to request a CGM Sensor to perform a procedure. This may include parameters that are valid within the context of that Op Code as defined in [\[1\]](#).

If the CGM Sensor supports E2E-safety (E2E-CRC Supported bit is set in CGM Features), the Collector shall protect all Op Codes and Operands by a CRC. For computation of the CRC, see section 3.11 in [\[1\]](#).

4.10.2.1 CGM Communication Interval Procedure

To request a specific setting of the CGM Communication Interval value, the Collector shall write the Set CGM Communication Interval Op Code to the CGM Specific Ops Control Point followed by a UINT8 parameter. For example, writing a parameter of 0x05 will set the CGM Communication Interval value to 5 minutes within the CGM Sensor.

The Collector shall wait for the *Response Code Op Code* indication with *Response Code Value* set to *Success* indicating success of the operation as per the request or an error value as described in Section [4.11.2](#).

4.10.2.2 Glucose Calibration Procedures

If the Calibration Supported bit of the CGM Feature characteristic is set to 1, then this procedure is supported by the CGM Sensor.

To calibrate the CGM Sensor, the Collector shall write the *Set Glucose Calibration Value Op Code* to the CGM Specific Ops Control Point followed by parameter that represents the Glucose Calibration data.

The Glucose Calibration parameter is a fixed length structure containing:

- the Calibration Glucose Concentration field
- the Calibration Time
- the Calibration Type-Sample Location field
- the Next Calibration Time field
- the Calibration Data Record Number
- the Calibration Status field

v1.0.1

The content of the Next Calibration Time field may be ignored or changed by the CGM Sensor. This is left to the implementation.

The content of the Calibration Data Record Number field that was sent with a *Set Glucose Calibration Value* Op Code will be ignored by the Sensor; the value of this field will be incremented by the CGM Sensor with each Calibration record stored.

The value of the Next Calibration Time field represents the time where next calibration is required as an offset to the Session Start time. If the value that was sent with a *Set Glucose Calibration Value* Op Code is between 0x0001 and 0xFFFFE, the CGM Sensor may change its calibration time according to the Operand value. The value 0xFFFF disables the calibration reminder (i.e., reminder functionality on the Client) until a value not equal to 0xFFFF is transmitted again.

Note: With a value of 0x0000, the CGM Sensor expects the new calibration as soon as possible.

The content of the Calibration Status field that was sent with a *Set Glucose Calibration Value* Op Code will be ignored by the CGM Sensor. The value of this field will be determined by the CGM Sensor after completion of the internal calibration process. As long as this process is not finished, the *Calibration Pending* bit in the Calibration Status field is set to 1. If the CGM Sensor supports E2E-safety (E2E-CRC Supported bit is set in CGM Features), the value of the Calibration Status field shall be used for CRC calculation, even if the value itself is ignored. What the Collector does in this case if a CRC error is detected is left to the implementation.

The Collector shall wait for the *Response Code Op Code* indication with *Response Code Value* set to *Success* indicating success of the operation as per the request or an error value as described in Section 4.11.2.

After the *Response Code Op Code* Indication with *Response Code Value* is set to *Success*, the Collector should check the status of the calibration by a read of the last Calibration Data Record. If the Calibration Data Record is rejected or is out of range, there may be the need for a new calibration.

To request a Calibration Data Record, the Collector shall write the *Get Glucose Calibration Value* Op Code to the CGM Specific Ops Control Point followed by an UINT16 parameter, representing the record number. With a parameter of 0xFFFF, the Collector will receive the last Calibration Data Record stored in the CGM Sensor. A value of "0" represents no calibration value stored in CGM Sensor.

4.10.2.3 Patient High/Low Alert Procedures

If the Patient High/Low Alerts Supported bit of the CGM Feature characteristic is set to 1, then these procedures are supported by the CGM Sensor.

To request a specific setting of the alert levels, the Collector shall write the *Set Patient High Alert Level Op Code* or the *Set Patient Low Alert Level Op Code* followed by a SFLOAT

parameter. For example, writing a parameter of 500 to the Patient High Alert Level will set the comparison level to a value of 500 mg/dl.

The Collector shall wait for the *Response Code Op Code* indication with *Response Code Value* set to *Success* indicating success of the operation as per the request or an error value as described in Section 4.11.2.

To get the actual stored values for these parameters, the Collector shall write the *Get Patient High Alert Level Op Code* to the control point and wait for the *Patient High Alert Level Response* indication with the value for the Patient High Level, or write the *Get Patient Low Alert Level Op Code* to the control point and wait for the *Patient Low Alert Level Response* indication with the value for the Patient Low Level.

4.10.2.4 Hypo Alert Procedures

If the Hypo Alert Supported bit of the CGM Feature characteristic is set to 1, then this procedure is supported by the CGM Sensor.

The CGM Sensor may allow the Collector to request a specific setting of the alert level. In this case the Collector shall write the *Set Hypo Alert Level Op Code* followed by a SFLOAT parameter. For example, writing a parameter of 50 to the Hypo Alert Level will set the comparison level to a value of 50 mg/dl.

The Collector shall wait for the *Response Code Op Code* indication with *Response Code Value* set to *Success* indicating success of the operation as per the request or an error value as described in Section 4.11.2

If the CGM Sensor has a hard coded value for the Hypo Alert, then this procedure is not supported and the CGM Sensor returns the corresponding error as described in section 4.11.2.

To get the actual stored values for this parameter the Collector shall write the *Get Hypo Alert Level Op Code* to the control point and wait for the *Hypo Alert Level Response* indication with the value for the Hypo Level.

4.10.2.5 Hyper Alert Procedures

If the Hyper Alert Supported bit of the CGM Feature characteristic is set to 1, then this procedure is supported by the CGM Sensor

The CGM Sensor may allow the Collector to request a specific setting of the alert level. In this case the Collector shall write the *Set Hyper Alert Level Op Code* followed by a SFLOAT parameter. For example, writing a parameter of 300 to the Hyper Alert Level will set the comparison level to a value of 300 mg/dl.

The Collector shall wait for the *Response Code Op Code* indication with *Response Code Value* set to *Success* indicating success of the operation as per the request or an error value as described in section 4.11.2.

If the CGM Sensor has a hard coded value for the Hyper Alert, than this procedure is not supported and the CGM Sensor returns the corresponding error as described in Section 4.11.2.

To get the actual stored values for this parameter the Collector shall write the *Get Hyper Alert Level* Op Code to the control point and wait for the *Hyper Alert Level Response* indication with the value for the Hyper Level.

4.10.2.6 Rate of Increase/Decrease Alert Procedures

If the Rate of Increase/Decrease Alert Supported bit of the CGM Feature characteristic is set to 1, then this procedure is supported by the CGM Sensor

The CGM Sensor may allow the Collector to request a specific setting of the Rate of Increase Alert level. In this case the Collector shall write the *Set Rate of Increase Alert Level* Op Code followed by a SFLOAT parameter. For example, writing a parameter of 2 to the Rate of Increase Alert Level will set the comparison level to a value of +2 mg/dl/min.

The Collector shall wait for the *Response Code Op Code* indication with *Response Code Value* set to *Success* indicating success of the operation as per the request or an error value as described in Section 4.11.2.

If the CGM Sensor has a hard coded value for the Rate of Increase Alert, than this procedure is not supported and the CGM Sensor returns the corresponding error as described in Section 4.11.2.

To get the actual stored values for this parameter the Collector shall write the *Get Rate of Increase Alert Level* Op Code to the control point and wait for the *Rate of Increase Alert Level Response* indication with the value for the Rate of Increase Level.

The CGM Sensor may allow the Collector to request a specific setting of the Rate of Decrease Alert level. In this case the Collector shall write the *Set Rate of Decrease Alert Level* Op Code followed by a SFLOAT parameter. For example, writing a parameter of -2 to the Rate of Decrease Alert Level will set the comparison level to a value of -2 mg/dl/min.

The Collector shall wait for the *Response Code Op Code* indication with *Response Code Value* set to *Success* indicating success of the operation as per the request or an error value as described in Section 4.11.2.

If the CGM Sensor has a hard coded value for the Rate of Decrease Alert, then this procedure is not supported and the CGM Sensor returns the corresponding error as described in Section 4.11.2.

To get the actual stored values for this parameter the Collector shall write the *Get Rate of Decrease Alert Level* Op Code to the control point and wait for the *Rate of Decrease Alert Level Response* indication with the value for the Rate of Decrease Level.

4.10.2.7 Reset Device Specific Alert Procedure

To request the reset of the Device Specific Alert, the Collector shall write the *Reset Device Specific Alert Op Code* to the CGM Specific Ops Control Point. The CGM Sensor then will reset the Device Specific Alert, if supported. If the Op Code is not supported by the CGM Sensor (e.g. Device Specific Alert is not latched), the CGM Sensor shall send an indication using the *Response Code Op Code* and the *Response Code Value* in the Operand set to *Op Code not supported*.

The Collector shall wait for the *Response Code Op Code* indication with *Response Code Value* set to *Success* indicating success of the operation as per the request or an error value as described in Section 4.11.2.

4.10.2.8 Start Session Procedure

To start the CGM session the Collector shall write the Op Code for Start Session to the CGM Specific Ops Control Point. The CGM Sensor then deletes all data from previous session and starts the measurement.

The Collector shall wait for the *Response Code Op Code* indication with *Response Code Value* set to *Success* indicating success of the operation as per the request or an error value as described in Section 4.11.2.

4.10.2.9 Stop Session Procedure

To stop the CGM session the Collector shall write the Op Code for Stop Session to the CGM Specific Ops Control Point. The CGM Sensor then stops the measurement.

The Collector shall wait for the *Response Code Op Code* indication with *Response Code Value* set to *Success* indicating success of the operation as per the request or an error value as described in Section 4.11.2.

4.11 Common Behavior of Control Points (RACP, CGMCP)

4.11.1 Procedure Timeout

In the context of the Control Point (CP) characteristics, a procedure is started when the CGM Sensor sends the response to the Collector's Write request for the CP characteristic. The procedure is considered to be complete when the CP characteristic is indicated with the Op Code set to *Response Code*.

A CP procedure may consist of multiple notifications of the CGM Measurement characteristic. The procedure is completed when the CP characteristic is indicated. A procedure is considered to have timed out if a notification or an indication is not received within the ATT transaction timeout, defined as 30 seconds in Volume 2 Part F Section 3.3.3 of [2], from the start of the procedure or from the last notification that was received as a result of this procedure.

If the link is lost while a CP procedure is in progress then the procedure shall be considered to have timed out. See Section 4.11.1 for handling this condition.

Thus a Collector shall start a timer, with the value set to the ATT transaction timeout, after the write response is received from the CGM Sensor. The timer shall be restarted after every CGM Measurement is received. The timer shall be stopped when a CP indication is received and the Op Code is set to *Response Code*. If the timer expires then the procedure shall be considered to have failed.

4.11.1.1 CP Procedure Timeout Handling

If a CP procedure times out (see Section 4.11.1 for details of how this may occur) then it is recommended to disconnect the link and to reconnect to the CGM Sensor.

In the case of a procedure timeout during a *Report Stored Records* procedure, the Collector may consider the received CGM Measurement records to be valid. However the Collector shall not assume that the records received consist of all of the available records on the CGM Sensor that match the filter criteria, i.e., the Collector shall assume that the records received during a *Report Stored Records* procedure that has timed out are an incomplete set of records based on the filter criteria. The Collector may then perform the procedure again, when a new link is established, adjusting the filter criteria based on the records received during the aborted transfer.

4.11.2 General Error Handling

Other than error handling procedures that are specific to certain Op Codes, the following apply:

If an Op Code is written to the Control Point characteristic and the Client Characteristic Configuration descriptor of the Control Point is not configured for indications, the CGM Sensor shall return an error response with the Attribute Protocol Application error code set to *Client Characteristic Configuration Descriptor Improperly Configured*.

In this case the Collector shall configure the Control Point for indications and repeat the procedure.

If the Collector writes an Op Code to the Control Point characteristic that is unsupported by the CGM Sensor, it will receive a *Response Code* CP indication with the *Response Code Value* set to *Op Code not supported*.

If the Collector writes an Operand to the Control Point characteristic that is invalid, it will receive a *Response Code* CP indication with the *Response Code Value* set to *Invalid Operand*.

If the Collector writes to a Control Point characteristic where a CRC value is expected and doesn't append the E2E-CRC field, it will receive an ATT Error Response with the error code set to *Missing CRC*.

If the Collector writes to a Control Point characteristic where a CRC value is expected and put a wrong value in the E2E-CRC field, it will receive an ATT Error Response with the error code set to *Invalid CRC*.

What the Collector does when receiving one of the error codes is left to the implementation.

4.12 Bond Management Service Characteristics Behavior

The Collector may write to the Bond Management Control Point to control the bond(s).

The Collector may perform a write to the Bond Management Control Point to request a desired procedure. A procedure begins when the Collector writes the BMCP to perform some desired action and ends when the ATT Write Response is received by the Collector.

The Collector shall determine the Bond Management features supported by the CGM Sensor by reading the Bond Management Feature characteristic before starting any Bond Management Control Point procedure.

4.12.1 Delete Bond of Requesting Device Procedures

If the Delete Bond of Requesting Device Procedure Supported bit of the Bond Management Feature characteristic is set to 1, then the procedure(s) are supported by the CGM Sensor

The CGM Sensor may allow the Collector to request the deletion of the bond information of the requested device's transport from its database. In this case the Collector shall write the Op Code related to the requested transport to the BMCP. If an authorization code is required, as determined by the Bond Management Feature characteristic (see Section 4.12.5), the Op Code shall be followed by a parameter representing the authorization code. The Collector shall wait for the ATT Write response of the CGM Sensor for successful operation or an ATT Error Code describing the error.

If the operation is successful, the Collector shall delete the corresponding bond information in its database after the requested transport(s) are no longer active.

4.12.2 Delete all Bonds Procedures

If the Delete all Bonds Procedure Supported bit of the Bond Management Feature characteristic is set to 1, then the procedure(s) are supported by the CGM Sensor

The CGM Sensor may allow the Collector to request the deletion of the bond information of the requested device's transport from its database. In this case the Collector shall write the Op Code related to the requested transport to the BMCP. If an authorization code is required, as determined by the Bond Management Feature characteristic (see Section 4.12.5), the Op Code shall be followed by a parameter representing the authorization code. The Collector shall wait for the ATT Write response of the CGM Sensor for successful operation or an ATT Error Code describing the error.

If the operation is successful, the Collector shall delete all bond information of the requested transport(s) in its database after the requested transport(s) are no longer active.

4.12.3 Delete Bond of all except the requesting device Procedures

If the Delete Bond of all except the requesting device Procedure Supported bit of the Bond Management Feature characteristic is set to 1, then the procedure(s) are supported by the CGM Sensor

The CGM Sensor may allow the Collector to request the deletion of the bond information of all but the requested device's transport from its database. In this case the Collector shall write the Op Code related to the requested transport to the BMCP. If an authorization code is required, as determined by the Bond Management Feature characteristic (see Section 4.12.5), the Op Code shall be followed by a parameter representing the authorization code. The Collector shall wait for the ATT Write response of the CGM Sensor for successful operation or an ATT Error Code describing the error.

If the operation is successful, the Collector shall delete all bond information of the requested transport(s) in its database, except the bond information of the requesting device's transport after the requested transport(s) are no longer active.

4.12.4 BMCP Error Handling

If the Collector writes an Operand to the Bond Management Control Point characteristic that is invalid, it will receive an ATT Error Response with the Attribute Protocol Error Code set to "Insufficient Authorization"

If the Collector writes an Op Code that doesn't fit the transportation requirements (e.g. an Op Code valid for BR/EDR transport is written to a single mode LE device) or the Op Code is not supported on the CGM Sensor, it will receive an ATT Error Response with the Attribute Application Error Code set to "Op Code not supported".

What the Collector does when receiving one of these error codes is left to the implementation.

If the Collector receives an ATT Error Response with the Attribute Application Error Code set to "Operation Failed", the procedure on the CGM Sensor was not successful and the Collector shall not assume that the bond information will be deleted after the requested transport(s) are no longer active.

4.12.5 Bond Management Feature Characteristic Behavior

The Collector shall read the Bond Management Feature characteristic to determine the supported procedures of the BMCP.

See the following table describing relationship between BM Feature bit, transport(s) and authorization requirement:

Bit	Octet	BM Feature Bit Description	BR/EDR Transport	LE Transport	Authorization required
0	0	Delete bond of requesting device (BR/EDR and LE)	X	X	
1	0	Delete bond of requesting device (BR/EDR and LE) with authorization code	X	X	X
2	0	Delete bond of requesting device (BR/EDR transport only)	X		
3	0	Delete bond of requesting device (BR/EDR transport only) with authorization code	X		X
4	0	Delete bond of requesting device (LE transport only)		X	
5	0	Delete bond of requesting device (LE transport only) with authorization code		X	X
6	0	Delete all bonds on server (BR/EDR and LE)	X	X	
7	0	Delete all bonds on server (BR/EDR and LE) with authorization code	X	X	X
0	1	Delete all bonds on server (BR/EDR transport only)	X		
1	1	Delete all bonds on server (BR/EDR transport only) with authorization code	X		X
2	1	Delete all bonds on server (LE transport only)		X	
3	1	Delete all bonds on server (LE transport only) with authorization code		X	X
4	1	Delete bond of all except the requesting device on the server (BR/EDR and LE)	X	X	
5	1	Delete bond of all except the requesting device on the server (BR/EDR and LE) with authorization code	X	X	X
6	1	Delete bond of all except the requesting device on the server (BR/EDR transport only)	X		

v1.0.1

Bit	Octet	BM Feature Bit Description	BR/EDR Transport	LE Transport	Authorization required
7	1	Delete bond of all except the requesting device on the server (BR/EDR transport only) with authorization code	X		X
0	2	Delete bond of all except the requesting device on the server (LE transport only)		X	
1	2	Delete bond of all except the requesting device on the server (LE transport only) with authorization code		X	X

Table 4.6: BM Feature Bits

If the Collector reads Bond Management Feature characteristic bits that are set and yet are designated as Reserved for Future Use (RFU) in [8], it shall ignore those bits and continue to operate normally as if the bits were not set.

4.13 Device Information Service Characteristics Behavior

The Collector may read the value of Device Information Service characteristics.

5 Connection Establishment

This section describes the connection establishment and connection termination procedures used by a CGM Sensor and Collector in certain scenarios.

The following scenario descriptions are informative:

Scenario I:

Once configured by the Collector, a CGM Sensor will typically remain powered on during use and will periodically send data to the Collector. The CGM Sensor will enter a GAP Connectable Mode and start advertising when it has data to send to the Collector. The Collector will typically execute a GAP connection establishment procedure such that it is scanning for the CGM Sensor. When a connection is established and the CGM Sensor is configured for notifications by the Collector, the CGM Sensor shall send notifications to the Collector at regular intervals. When the CGM session ends, the Collector typically terminates the connection.

Scenario II:

Due to energy limitations the Scenario I may not be feasible for a CGM Sensor, so the CGM Sensor will enter a GAP Connectable Mode and start advertising when it has data to send to the Collector. The Collector will typically execute a GAP connection establishment procedure such that it is scanning for the CGM Sensor. When a connection is established the CGM Sensor sends one or more indications or notifications to the Collector. When the data transfer is complete the CGM Sensor typically terminates the connection.

5.1 CGM Sensor Connection Establishment

This section describes connection procedures to address the following scenarios:

- Section 5.1.1 describes the connection procedure when the CGM Sensor does not support bonding or if the CGM Sensor supports bonding but is not bonded with any Collector.
- Section 5.1.2 describes the connection procedure when the CGM Sensor is bonded with one or more Collectors.
- Section 5.1.3 is used when the established connection is broken after a link loss.

5.1.1 Connection Procedure for Unbonded Devices

This procedure is applicable when the CGM Sensor connects to a Collector to which it is not yet bonded (i.e. initial connection). This is typically initiated through user interaction when a user intends to bond the CGM Sensor with a Collector.

The CGM Sensor should use the GAP *General Discoverable Mode* with connectable undirected advertising events when establishing an initial connection. It is recommended to use the advertising interval parameters in [Table 5.1](#). The interval values in the first row are designed to

attempt fast connection during the first 30 seconds; however, if a connection is not established within that time, the interval values in the second row are designed to reduce power consumption for devices that continue to advertise.

Advertising Duration	Parameter	Value
First 30 seconds (fast connection)	Advertising Interval	30 ms to 300 ms
After 30 seconds (reduced power)	Advertising Interval	1 s to 10.24 s

Table 5.1: Recommended Advertising Interval Values

Notwithstanding the above, the advertising interval and time to perform advertising should be configured with consideration for user expectations of connection establishment time.

The CGM Sensor shall accept any valid values for connection interval and connection latency set by the Collector until service discovery and encryption is complete. Only after this has been completed should the CGM Sensor request to change to the preferred connection parameters that best suits its use case.

If a connection is not established within a time limit defined by the CGM Sensor, the CGM Sensor may exit the GAP discoverable mode.

The CGM Sensor shall be in a bondable mode during this procedure to optimize connecting to the Collector again using the procedure described in Section 5.1.2.

If a bond is created, the CGM Sensor should write the Bluetooth device address of the Collector in the CGM Sensor controller's White List and set the CGM Sensor controller's advertising filter policy to process scan and connection requests only from devices in the White List.

When not in a connection for a "Waiting Time" as defined in Table 5.2, the CGM Sensor may reset the CGM Sensor controller's advertising filter policy to process all scan and connection requests. This will allow another Collector to connect.

Parameter	Value
Waiting Time	30 s to 600 s

Table 5.2: Recommended Waiting Time

5.1.2 Connection Procedure for Bonded Devices

This procedure is applicable after the CGM Sensor has bonded with the Collector using the connection procedure in Section 5.1.1 and either when the user initiates a connection or autonomously when new measurements have been taken.

A CGM Sensor should use the GAP *Undirected Connectable Mode* either when commanded by the user to initiate a connection to a Collector or when a CGM Sensor has one or more measurements to send to a previously connected Collector. For a time as defined in Table 5.2 (Waiting Time) a White List containing addresses of only bonded devices should be used to

v1.0.1

allow only active bonded Collectors to establish a connection. After this time the White List should no longer be used to allow connection with other Collectors.

It is recommended to use the advertising interval parameters in [Table 5.1](#). The interval values in the first row are designed to attempt fast connection during the first 30 seconds; however, if a connection is not established within that time, the interval values in the second row are designed to reduce power consumption for devices that continue to advertise.

The advertising interval and time to perform advertising should be configured with consideration for user expectations of connection establishment time.

Once connected, the CGM Sensor may request a change to the preferred connection parameters that best suits its use case.

Refer to [Section 5.1.4](#) for additional requirements related to support for multiple bonds.

5.1.3 Link Loss Reconnection Procedure

When a connection is terminated due to link loss, the CGM Sensor should enter GAP *Undirected Connectable Mode* using the recommended advertising interval values shown in [Table 5.1](#).

A CGM Sensor may attempt to reconnect to the Collector by entering the GAP *Directed Connectable Mode*. This mode consumes a lot of energy, so time spent in this mode is the responsibility of the implementation. After this attempt, the CGM Sensor should switch to GAP *Undirected Connectable Mode* using the recommended advertising interval values shown in [Table 5.1](#).

5.1.4 Multi-Bond Considerations

A CGM Sensor may advertise with the address of the target Collector(s) in a Target Address AD Type to enable bonded Collectors to determine if they are the intended recipient of the data. This feature is designed to avoid a situation where a bonded Collector unnecessarily responds to the CGM Sensor advertisement intended for another bonded Collector. The applicable Public Target Address AD Type or Random Target Address AD Type format (see [Table 5.3](#)) should be used when including the address corresponding to Collector's address type.

A CGM Sensor may include multiple target addresses in its Advertising Data or Scan Response Data. As described in [Section 5.1.2](#), the CGM Sensor should also use a White List to avoid connection with an unwanted Collector.

Description	Information
Public Target Address	Multiples of 6 octets – 6 octets are required for each Device Address of the targeted Collector. This AD type is used when the target address is a public address. This data type shall exist only once.

v1.0.1

Description	Information
Random Target Address	Multiples of 6 octets – 6 octets are required for each Device Address of the targeted Collector. This AD type is used when the target address is a random address. This data type shall exist only once.

Table 5.3: Target Address AD Types

5.2 Collector Connection Establishment for Low Energy Transport

This section describes connection procedures to address the following scenarios:

- Section 5.2.1 describes the connection procedure if the Collector needs to initiate a connection to an unbonded CGM Sensor.
- Section 5.2.2 describes the connection procedure if the Collector needs to initiate a connection to a bonded CGM Sensor.
- Section 5.2.3 is used when the established connection is broken after a link loss.

5.2.1 Connection Procedure for Unbonded Devices

This procedure is applicable for connection establishment when the Collector connects to a CGM Sensor to which it is not yet bonded (i.e. initial connection). This is typically initiated through user interaction when a user intends to bond the Collector with the CGM Sensor.

The Collector should use the GAP *General Discovery* procedure to discover a CGM Sensor.

The Collector should use the recommended scan interval and scan window values shown in Table 5.4. For the first 30 seconds (or optionally continuously for mains powered devices), the Collector should use the first scan window / scan interval pair to attempt fast connection. However, if a connection is not established within that time, the Collector should switch to one of the other scan window / scan interval options as defined below to reduce power consumption.

Once the CGM Sensor is discovered, the Collector should initiate connection using the *Direct Connection Establishment* procedure.

Scan Duration	Parameter	Value
First 30 seconds (fast connection)	Scan Interval	30ms to 60ms*
	Scan Window	30ms
After 30 seconds (reduced power) - Option 1	Scan Interval	1.28s
	Scan Window	11.25ms
After 30 seconds (reduced power) - Option 2	Scan Interval	2.56s
	Scan Window	11.25ms

Table 5.4: Recommended Scan Interval and Scan Window Values

v1.0.1

* A scan interval of 60ms is recommended when the Collector is supporting other operations to provide a 50% scan duty cycle versus 100% scan duty cycle.

Option 1 in the table above uses the same background scanning interval used in BR/EDR so the power consumption for LE will be similar to the power consumption used for background scanning on BR/EDR. Option 2 uses a larger background scanning interval (e.g. twice as long) than used in BR/EDR so the power consumption for LE will be less than the power consumption used for background scanning on BR/EDR. Connection times during background scanning will be longer with Option 2.

After the connection is established, the Collector shall bond with the CGM Sensor during this procedure to optimize connecting to the CGM Sensor again using the procedure in Section 5.2.2. Once a bond is created, the Collector should write the address of the CGM Sensor in the Collector controller's White List.

The Collector shall configure the Client Characteristic Configuration descriptor to enable notifications or indications as needed.

The Collector should terminate the connection when the CGM session is ended or terminated by the user.

5.2.2 Connection Procedure for Bonded Devices

This procedure is applicable after the Collector has bonded with the CGM Sensor using the connection procedure in Section 5.2.1 and either when the user initiates a connection or autonomously when a Collector requires measurements from a CGM Sensor.

A Collector may use one of the following GAP connection procedures based on its connectivity requirements:

- *General Connection Establishment Procedure.* The Collector may use this procedure when it requires measurements from a CGM Sensor. This procedure allows a Collector to connect to a CGM Sensor discovered during a scan without using the White List. The Collector should decode the Target Address AD Type to attempt to get the target address as described below in this section.
- *Selective Connection Establishment Procedure.* The Collector may use this procedure when it requires measurements from a CGM Sensor. This procedure allows a Collector to connect to a CGM Sensor discovered during a scan while using the White List. The Collector should decode the Target Address AD Type to attempt to get the target address as described below in this section.
- *Direct Connection Establishment Procedure.* The Collector may use this procedure when it requires measurements from a CGM Sensor. The Collector may also use this procedure for link loss reconnection described in Section 5.2.3.

- *Auto Connection Establishment Procedure.* The Collector may use this procedure when it requires measurements from a CGM Sensor. This procedure will automatically initiate connection to a CGM Sensor in the White List.

The Collector should use the recommended scan interval and scan window values shown in [Table 5.4](#). When initiating connection, the Collector should use the first scan window / scan interval pair to attempt fast connection. However, if a connection is not established within 30 seconds, the Collector should switch to one of the other scan window / scan interval options as defined in [Table 5.4](#) to reduce power consumption.

If the Collector is in background scanning, it may use the scan window / scan interval Option 1 or Option 2 to reduce power consumption.

Notwithstanding the above, the Collector should use a scan window and scan interval suitable to its power and connection time requirements. Increasing the scan window increases the power consumption, but decreases the connection time.

The scan interval and scan window should be configured with consideration for user expectations of connection establishment time.

The Collector shall start encryption after each connection creation to verify the status of the bond. If encryption fails upon connection establishment (i.e. the bond no longer exists), the Collector shall, after user interaction, re-bond, perform service discovery (unless the Collector had previously determined that the CGM Sensor did not have the «Service Changed» characteristic), and set the CGM Sensor Client Characteristic Configuration descriptors again before using any of the services referenced by this profile in case the configuration was altered or lost.

5.2.3 Link Loss Reconnection Procedure

When a connection is terminated due to link loss, a Collector should attempt to reconnect to the CGM Sensor using any of the GAP connection procedures with the parameters in [Table 5.4](#).

5.2.4 Fast Connection Interval

To avoid very long service discovery and encryption times, the Collector should use the connection interval limits defined in [Table 5.5](#) in the connection request.

Parameter	Value
Minimum Connection Interval	30 ms
Maximum Connection Interval	100 ms

Table 5.5: Recommended Fast Connection Interval Values

At any time a lower latency is required, for example to perform key refresh or encryption setup, this should be preceded with a connection parameter update to the minimum and maximum connection interval values defined in [Table 5.5](#) and a connection latency of zero. This fast connection interval should be maintained as long as low latency is required. After that, it should

v1.0.1

switch to the preferred connection parameters as decided by the CGM Sensor using the GAP *Connection Parameter Update* procedure.

5.3 Connection Establishment for BR/EDR

This section describes the connection establishment and connection termination procedures used by a CGM Sensor and Collector using BR/EDR transport. Unlike the LE Connection procedures, which describe specific connection parameters, BR/EDR connection establishment does not state requirements beyond those described in GAP based on potential interactions with other BR/EDR profiles operating concurrently on the CGM Sensor and/or Collector. Therefore, power consumption may not be optimized for the BR/EDR transport as compared to the LE transport when no other profiles are operating over the BR/EDR transport.

When using BR/EDR, devices can utilize sniff mode to reduce power consumption; however no particular parameters are recommended and the requirements of other profiles may be considered.

5.3.1 Connection Procedure

The procedures for establishing a connection between a CGM Sensor and a CGM Collector that do not have an existing bond and for re-establishing a connection between bonded devices use the inquiry, discovery, paging, pairing and security procedures described in Generic Access Profile of the Core Specification and any additional GAP requirements enumerated in sections 6 and 7.

5.3.1.1 Connection Procedure for Unbonded Devices

The CGM Sensor shall use the GAP General Discoverable Mode when is not bonded with any Collectors and is ready for a connection (e.g. when CGM session is started).

The Collector should use the GAP General Discovery procedure to discover a CGM Sensor to establish a connection to a CGM Sensor which is not bonded.

Either the CGM Sensor or the Collector can establish a BR/EDR link to a remote peer device.

Once a link is established, the Collector shall discover the CGM Service using SDP procedures prior to establishing a GATT connection.

Once the CGM Service is discovered and a GATT connection is established, the Collector shall discover the CGM Service characteristics exposed by this service using GATT Discovery procedures.

Once connected and the CGM Service is discovered, the Collector shall configure the CGM Measurement characteristic for notification.

The Collector should initiate bonding between the two devices. If a bond is created, the Collector should cache the SDP Service Record for the CGM Service.

The CGM Sensor may disconnect the link when no measurements are taken any more, depending on the use cases of the devices and other profiles connected on either device.

5.3.1.2 Connection Procedure for bonded Devices

The CGM Sensor shall use the GAP Link Establishment Procedure to connect to any bonded Collectors when it is ready for a connection. The Collector should be connectable to accept a connection from a CGM Sensor to which it is bonded.

Either the CGM Sensor or the Collector can establish a BR/EDR link to a remote peer device.

If a higher layer determines the bond no longer exists on the remote device, the local device shall reconfigure the remote device after

- user interaction confirms that the user wants to re-pair with the remote device,
- re-bonding has been performed, and
- Service discovery has been performed.

If the local device had previously determined that the remote device did not have the «Service Changed» characteristic then service discovery may be skipped.

5.3.2 Link Loss Reconnection Procedure

When a connection is terminated due to link loss, a CGM Sensor should reconnect to the Collector by attempting, for an implementation-specific time, to reestablish an ACL link between the two devices. The Collector should remain Connectable for an implementation-specific time so that a CGM Sensor can reestablish an ACL link.

6 Security Considerations

This section describes the security considerations for a CGM Sensor and Collector.

6.1 CGM Sensor Security Considerations for Low Energy

This section describes the security requirements for the CGM Sensor for LE transport.

All supported characteristics specified by the CGM Service shall be set to Security Mode 1 and either Security Level 2 or 3.

The CGM Sensor shall bond with the Collector.

The CGM Sensor shall use the SM *Slave Security Request* procedure to inform the Collector of its security requirements.

All characteristics specified by the Device Information Service and by the Bond Management Service that are relevant to this profile should be set to the same security mode and level as the characteristics in the CGM Service.

6.2 Collector Security Considerations for Low Energy

This section describes the security requirements for the Collector for LE transport.

The Collector shall bond with the CGM Sensor.

The Collector shall accept any request by the CGM Sensor for LE Security Mode 1 and either Security Level 2 or 3.

6.3 Security Considerations for BR/EDR

As required by GAP, Security Mode 4 shall be used for connections by CGM Sensor and Collector.

- The Collector and the CGM Sensor should bond
- Acceptance of Bonding should be supported by all CGM Sensors and Collectors
- Initiation of Bonding should be supported by Collectors

7 Generic Access Profile for BR/EDR

This section defines the support requirements for the capabilities as defined in the Generic Access Profile of the Core Specification [2] when BR/EDR is used.

7.1 Modes

The Mode Procedures as defined in GAP describe requirements for both CGM Sensor and Collectors involved. This profile further refines the requirements.

- General Discoverable mode shall be supported by CGM Sensors supporting BR/EDR.
- Bondable mode shall be supported by CGM Sensors and Collectors

Table 7.1 shows the support status for GAP Modes in this profile.

Procedure	Support in CGM Sensor	Support in Collector
General Discoverable Mode	M	X

Table 7.1: Modes

7.2 Idle Mode Procedures

The Idle Mode Procedures as defined in GAP describe requirements for both CGM Sensor and Collector involved. This profile further refines requirements.

General inquiry shall be supported by all Collectors

General bonding shall be supported by all CGM Sensors and Collectors

Table 7.2 shows the support status for Idle Mode procedures within this profile.

Procedure	Support in CGM Sensor	Support in Collector
General Inquiry	X	M

Table 7.2: Idle Mode Procedures

8 Acronyms and Abbreviations

Any abbreviation or acronym used in the document, but not defined in the common specification sections (e.g., Volume 1 Part B), is defined here. The list is alphabetized.

Abbreviation or Acronym	Meaning
BM	Bond Management
BMCP	Bond Management Control Point
BMS	Bond Management Service
BR/EDR	Basic Rate / Enhanced Data Rate
CGM	Continuous Glucose Monitoring
CGMCP	CGM Specific Ops Control Point
CP	Control Point
HS	High Speed
RACP	Record Access Control Point

Table 8.1: Abbreviations and Acronyms

9 References

- [1] CGM Service
- [2] Bluetooth Core Specification v4.0 as amended by CSA3 and CSS v2 or later
- [3] Device Information Service v1.1 or later
- [4] Health Device Profile v1.0 or later
- [5] Characteristic and Descriptor descriptions are accessible via the [Bluetooth SIG Assigned Numbers](#)
- [6] Personal Health Devices Transcoding White Paper v1.2 or later
- [7] ISO/IEEE Std 11073-20601™- 2008 Health Informatics - Personal Health Device Communication - Application Profile - Optimized Exchange Protocol - version 1.0 or later. This also includes ISO/IEEE Std 11073-20601a™- 2010 – Amendment 1.
- [8] Bond Management Service v1.0 or later

Appendix A Example of Record Access Control Point Usage

Below is an informative example showing the use of the RACP in the context of the CGM Profile:

1. At 04 October 2011 12:40:00 pm (user-facing time internal to the CGM Sensor i.e., Base Time + Time Offset), the Client requests records for the first time and requests the number of all records stored in the device.
 - a. The Client writes Op Code 0x04 to request number of records with an Operator of 0x01 meaning “all records” and no Operand.
 - b. The CGM Sensor indicates back Op Code 0x05, an Operator of 0x00 (meaning “Null”) and Operand containing the number of all records (0x00F7 in this example)
2. Immediately after that, the Client requests a report of stored records.
 - a. The Client writes Op Code 0x01 to request all records with an Operator of 0x01 meaning “all records” and no Operand.
 - b. The Server notifies all records (Series of CGM Measurement characteristics followed sometimes by Status Annunciation characteristics) where the total number of CGM Measurement characteristics totals 0x00F7.
 - c. The CGM Sensor indicates Op Code 0x06 with an Operator of 0x00 (meaning “Null”) and Operand of 0x01, 0x01 meaning “successful response to Op Code 0x01”.
 - d. The Client stores the Sequence Number of the last received record for future use (0x00F7 since this was the first use and with the assumption in this example that the sequence number of the first record is 0x0001).
 - e. Since this is a critical application, the Client performs some post-processing checks to make sure no major inconsistencies to the Base Time or Time Offset occurred. The Client also checks to see if any numbers in the sequence are missing.
3. Several days later, the Client requests a report of records since the last update.
 - a. The Client writes Op Code 0x01 to request records with an Operator of 0x03 meaning “greater than or equal to” and an Operand set to Filter Type 0x01, 0x00F8) that is one number in the sequence more than the Sequence Number from the last record it received.
 - b. The CGM Sensor notifies all records that have accrued since the last request.

v1.0.1

- c. The CGM Sensor indicates Op Code 0x06 with an Operator of 0x00 (meaning “Null”) and Operand of 0x05, 0x01 meaning “successful response to Op Code 0x05”.